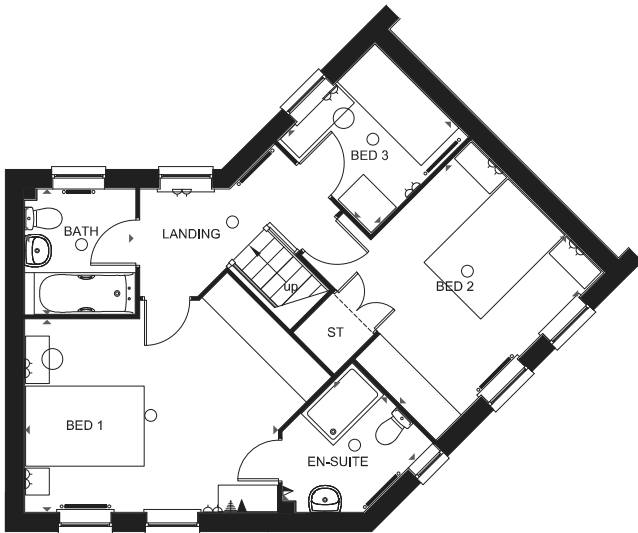


Ground Floor

Lounge	5450 x 3322mm	17'11" x 10'11"
Kitchen	3590 x 2900mm	11'9" x 9'6"
Dining Room	3364 x 2400mm	11'0" x 7'10"
WC	1542 x 1450mm	5'1" x 4'8"

[Approximate dimensions]



First Floor

Bedroom 1	4262 x 3250mm	14'0" x 10'8"
En Suite	2471 x 1922mm	8'1" x 6'4"
Bedroom 2	3985 x 3149mm	13'1" x 10'4"
Bedroom 3	2313 x 2213mm	7'7" x 7'3"
Bathroom	2112 x 1863mm	6'11" x 6'1"

[Approximate dimensions]

KEY	○ Light fitting	▲ T.V. aerial socket	B Boiler	wm Washing machine space	◀▶ Dimension location
	◻ Electric socket	▲ Shaver socket	ST Store	f/f Fridge/freezer space	
	◻ Telephone outlet point	— Radiator	CYL Cylinder	dw Dishwasher space	

barratthomes.co.uk

IMPORTANT NOTICE: [Computer Generated] Images are for illustrative purposes only. Individual features such as windows, brick and other materials' colours may vary, as may heating and electrical layouts. Floor plans are intended to give a general indication of the proposed floor layout only. The dimensions are accurate to within +or- 50mm. Dimensions should not be used for carpet sizes, appliance spaces or items of furniture. Please ask our sales adviser for details of the treatments specified for individual plots. [Computer Generated] Images and dimensions are not intended to form part of any contract or warranty. Furniture and landscaping is shown for illustrative purposes only.

BWM/238565/STD/MAY2013